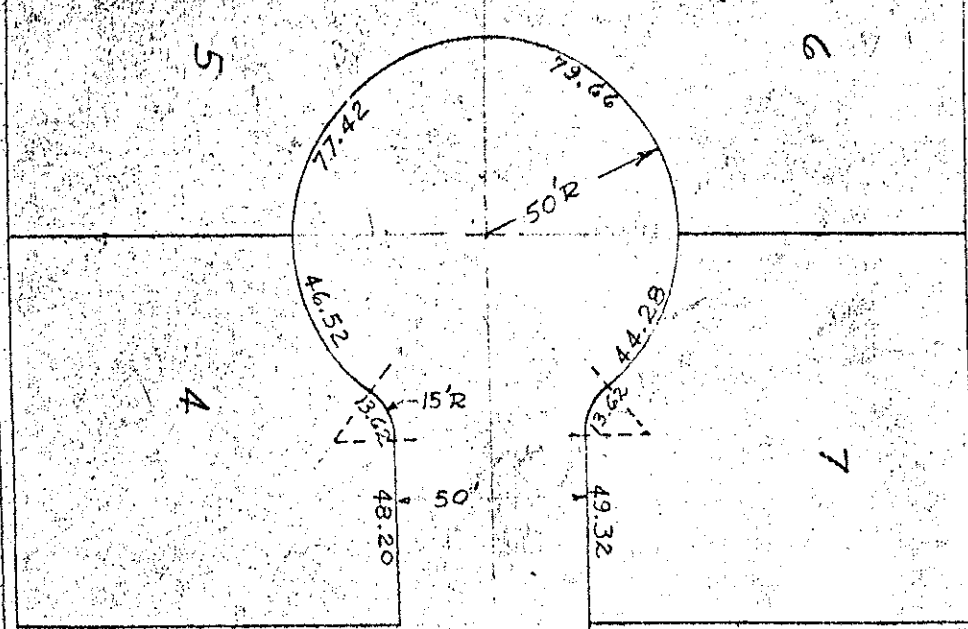


6-45/43-9

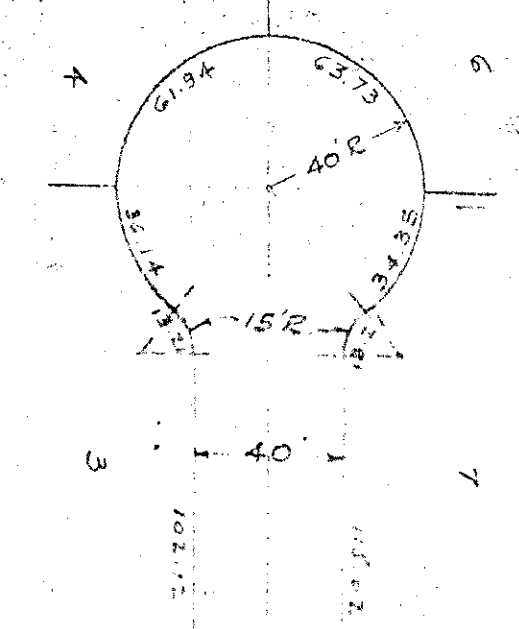
# HYPOLUXO VILLAGE

17 SECTION 6, T. 45 S., R. 43 E. PALM BEACH COUNTY, FLORIDA

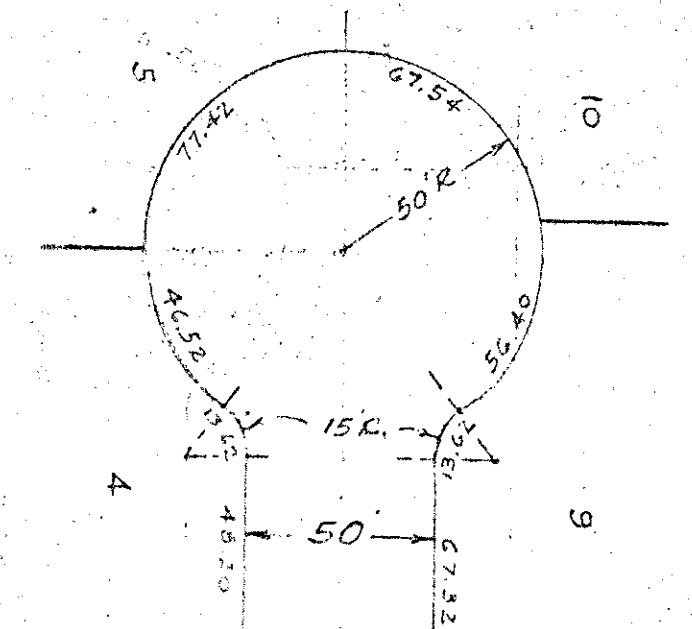
SCALE 1"=100' H.C. FUGATE, SURVEYOR JUNE 27, 1956



DETAIL OF ALL ROADS EXCEPT BUCCANEER AND SEAGRAPH



DETAIL OF SEAGRAPP

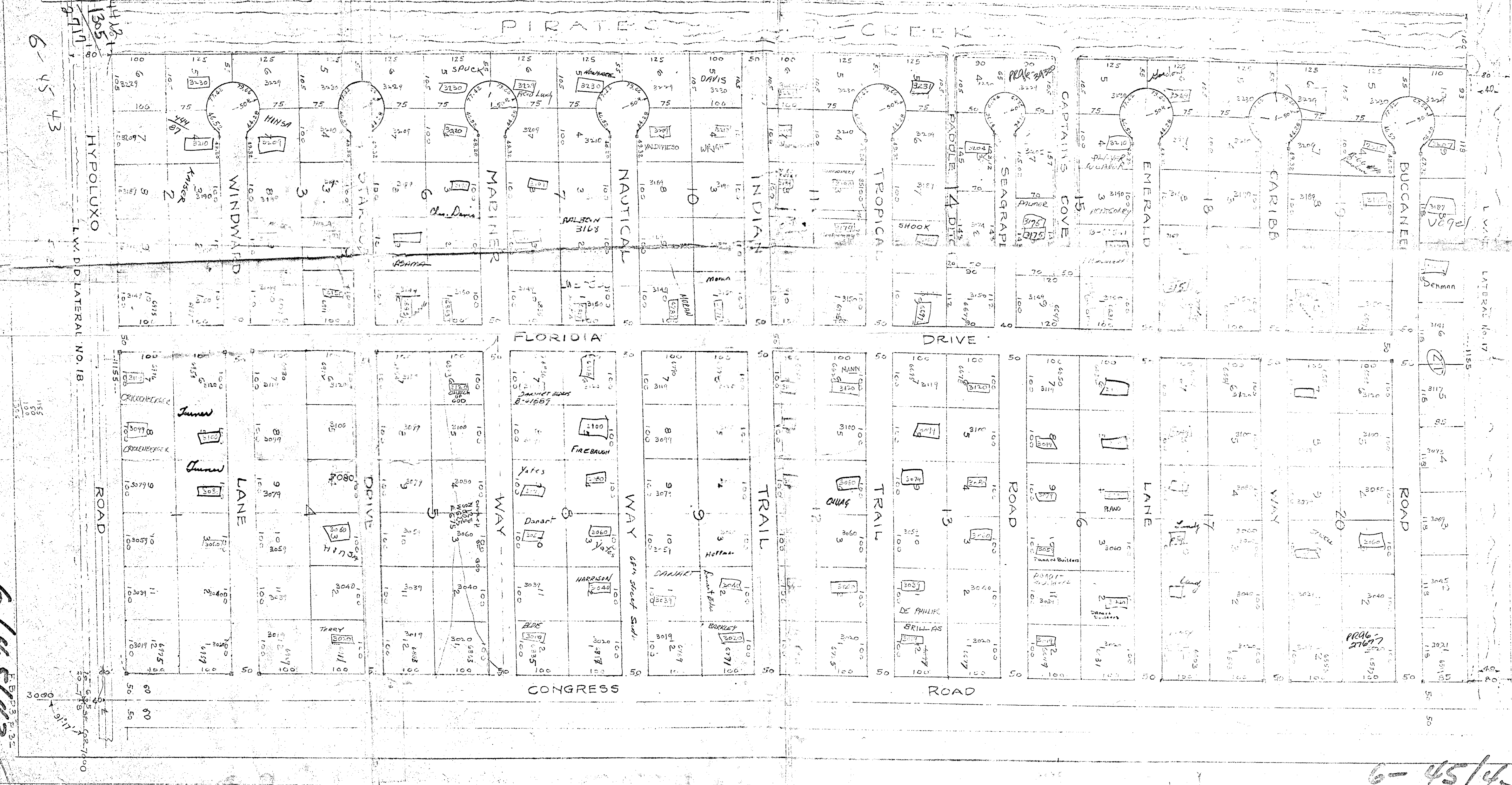


DETAIL OF BUCCANEER

6-45/43

READING FILE  
PALM BEACH COUNTY  
PLANNING, ZONING & BUILDING DEPARTMENT  
P. O. BOX 1500  
WEST PALM BEACH, FLORIDA 33402

PIRATES CREEK



6-45/43

6-45/43

6-45/43

ur0317.igr  
HYPOLUXO VILLAGE PLAT 1

3000-091